

MLT

Minet Lacing Technology



FIX'NGO®

THE EASY SOLUTION TO REPAIR BELT RIPS & TEARS

Quick and Easy Installation Process

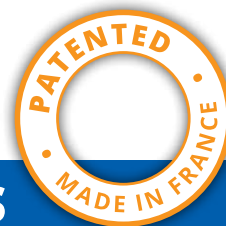
ONE Solution for All Applications

Makes it EASY!



What is it?

FIX'N GO



THE EASY SOLUTION TO REPAIR BELT RIPS & TEARS

- **Fix'N Go** is an innovative and unique solution for repairing belt rips and tears.
- Thanks to the 50 mm³ rubber used, **Fix'N Go** has a higher abrasion resistance compound than most of your the conveyor belts used today. All without impacting its flexibility, resistance to elongation and or tensile strength.
- Repairing your belt with **Fix'N Go** results in a quick and permanent solution. No need to replace it.
- **MLT** patented screws are self-drilling and self-tapping: they spread the carcass threads without cutting them.



SPECIFICS

AVAILABLE VERSIONS

- Available in Abrasion Resistant (2 choices: Galvanized or Stainless Steel)
- Also available in Heat-Resistant (HOT)
- Carbon steel inserts and screws
- Specs:
 - Width: 158 mm/6¼"
 - Thickness top plate: 3 to 4 mm
 - Thickness bottom plate: 2 to 3 mm
 - Quantity of screws per meter: 150

PACKAGING

- Available in boxes of 2 meters or 20 meters, with screws

INSTALLATION TOOLS

- Battery, electric or pneumatic operated drill or screwdriver
- Belt skiver

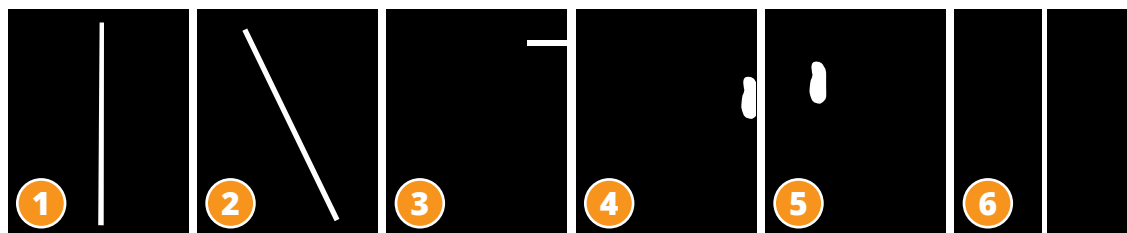


When to Use FIX'N GO



Need more information?
Please visit our website

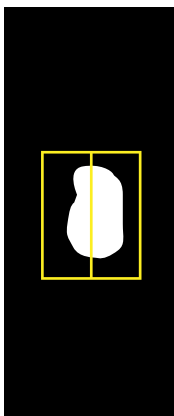
MLTnorthamerica.com



LEGEND

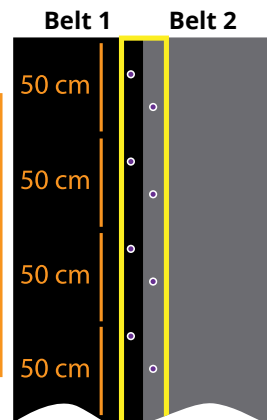
- Conveyor Belt
- Hole/Tear
- Fix'N Go
- Screws

- 1 Longitudinal tear
- 2 Transverse tear <50% of width of the belt. **Fix'N Go** must remain 20% on the belt width of each side of the tear
- 3 Band edge tear <20% of the width of the belt
- 4 Hole up to 10 cm wide along the belt edge
- 5 Hole up to 20 cm wide
- 6 Joining of two belts lengthwise



If larger hole than Fix'N Go:

- Put side by side **Fix'N Go**.
- These pieces will be installed along the direction of travel.



When longitudinally joining two belts:

- Screw every 50 cm on each band.
- Alternate screwing pattern over the entire length.

FIX'N GO Installation Method

REQUIRED MATERIALS

- 1 drill
- 1 skiver with blades
- Belt marking pen
- Utility knife



IMPORTANT

- Always cut the **Fix'N Go** following the steps in the photos
- The installation is completed on a solid work station



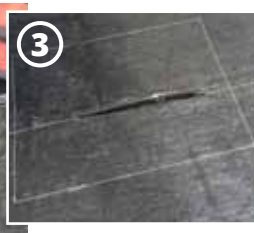
ON THE UPPER FACE...



1 Cut your **Fix'N Go** so that there is at least one row of screws around the tear (SEE IMAGE ABOVE)



2 Cover tear or hole with top part of **Fix'N Go**
Mark the outline with a pen



3 Cut the outline while maintaining the integrity of the carcass



4 Cut the outline while maintaining the integrity of the carcass



5 Skive the area marked by the outline, being careful not to cut the carcass



6 Skive the area marked by the outline, being careful not to cut the carcass



7 Insert the 2 longest screws in the **Fix'N Go** kit



8 Align bottom of **Fix'N Go** with the 2 long screws

ON THE LOWER FACE...



1 **DRAW**
Mark the outline of the **Fix'N Go** using a rubber pencil



2 **REMOVE COVER**
Remove the long screws



3 **CUTTING**
Cut the outline while maintaining the integrity of the carcass



4 **SKIVE**
Skive the bottom cover with the 2.5 mm blade



5 Secure bottom of the **Fix'N Go** by installing all the screws, alternating sides and rows



6 The four corners are installed last



THE BELT IS REPAIRED!



Belt repair with Super-Screw® Splice



Clip'N Lock® Fasteners



MS® 55 Fasteners



Self-Lock® Fasteners



Quality Products
Simplified Work



MR® Fasteners



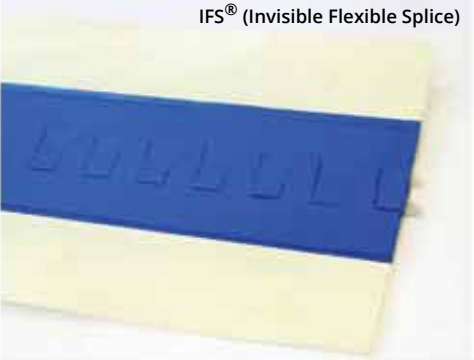
Fix'N Go® Packaging



Fix'N Go



Super-Screw Splice



IFS® (Invisible Flexible Splice)



RV6 Fastener



Belt Skiver



Technical Assistance



Innovative R&D



Product Info Online



Standard Products Ready to Ship



Training Available



Fast Turnaround

MLT, a full line of conveyor belt fasteners and conveyor belt products



Call Toll Free: 1-866-711-4673
WebSales@GoodyearRubberProducts.com
We Ship World Wide

