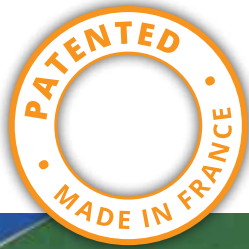


# MLT

Minet Lacing Technology

## Clip 'N Lock<sup>®</sup> Fasteners



**Fasteners for Light-Duty Conveyor Belts**



# What is it? Clip 'N Lock<sup>®</sup> Fasteners

## INNOVATION

**Clip'N Lock** is a low profile, light-duty fastener. It maintains the normal pitch and ensures an excellent gripping of the claws in wide conveyor belts. All of this is accomplished with 2 additional features to its highly-specialized design:

- Double rows of teeth for additional strength
- Continuous connection eliminates the risk of losing claws

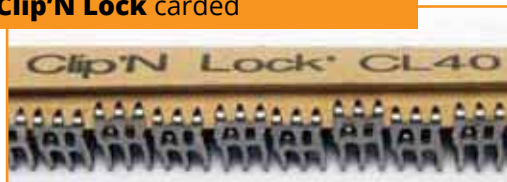
Double rows of teeth for additional strength



Continuously connected design eliminates risk of losing claws



Clip'N Lock carded



Need more information?  
Please visit our website

[MLTnorthamerica.com](http://MLTnorthamerica.com)

Top side of Clip'N Lock

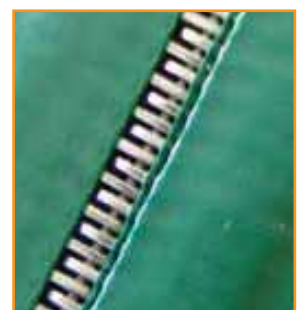


Bottom side of Clip'N Lock

## ADVANTAGES

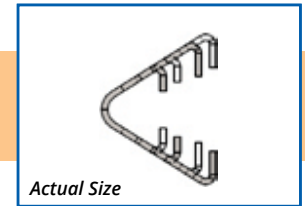
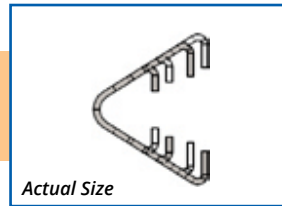
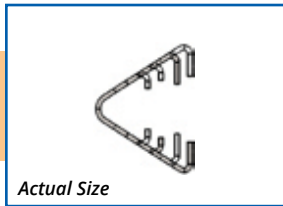
- Continuously connected design, developed by Minet Lacing Technology's R&D organization:
  - Eliminates risk of losing claws or staples
  - Helps to maintain pitch in wide belts
  - Perfect for trough belts
- 33% more grip points provide extra strength compared to other fasteners

- **Integrated into the belt without extra thickness**
- **Perfect for trough belts**
- **Continuous teeth**





# Technical Data



	CL 30	CL 40	CL 50
Lacing Pitch	2.54 mm	3.175 mm	3.67 mm
Belt Thickness (Regular point fastener)	1.5 to 2 mm .059" to .078"	2 to 3 mm .078" to .118"	3 to 5 mm .118" to .196"
Minimum Pulley Ø	50 mm 2"	60 mm 2.5"	75 mm 3"
Material	316 L antimagnetic stainless steel	316 L antimagnetic stainless steel	316 L antimagnetic stainless steel
Installation	MultiTool or Vice Tool (see below)		
Hinge	Nylon covered or bare stainless steel pin Ø 1.5 - 1.8 mm .059" - .070"	Nylon covered or bare stainless steel pin Ø 1.8 - 2.1 mm .070" - .083"	Nylon covered or bare stainless steel pin Ø 2 - 2.6 mm .078" - .097"
Packaging	In a standard box, with each containing 10 strips of 300 mm (12") OR 600 mm (24") OR 1200 mm (48")		

## INSTALLATION TOOLS

### FEATURES

- To install: **Self-Lock®** or **Clip 'N Lock**, Wire hook and flexible steel fasteners
- Module type tool
- 250 mm / 10" long jaws
- Different comb length, by request
- Can work on horizontal or vertical support

#### Can perform with :

- Hydraulic electric pump
- Pneumatic hydro pump
- Hydraulic hand pump

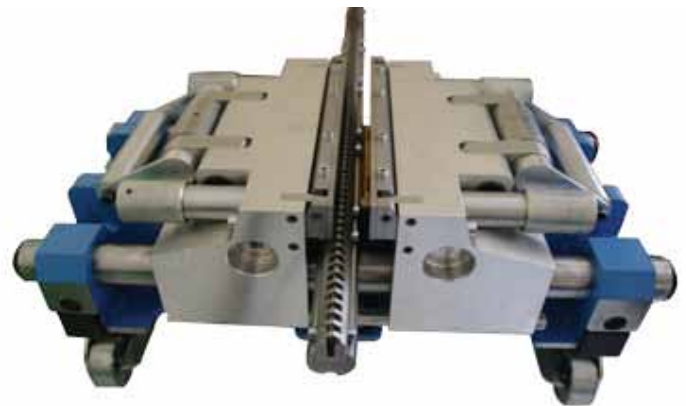


### ADVANTAGES

- **Versatile**
- **Quick**
- **Integrated belt clamps**
- **Professional industrial quality**

## 1. MultiTool

Multi fasteners installation tool



## 2. Vice Tool





Belt repair with Super-Screw® Splice



Super-Screw® Lacings ready to go down in mine



MS® 55 Fasteners



Self-Lock Fasteners



Quality Products  
Simplified Work



MR® Fasteners



Super-Screw Splice



Fix'N Go



Clip'N Lock Fasteners



Super-Screw Splice



Belt Skiver



RV6 Fastener



Technical Assistance



Innovative R&D



Product Info Online



Standard Products Ready to Ship



Training Available



Fast Turnaround

**MLT, a full line of conveyor belt fasteners and conveyor belt products.**



Call Toll Free: 1-866-711-4673  
WebSales@GoodyearRubberProducts.com  
We Ship World Wide

